

# 500 GEMSTONE JEWELS



A Sparkling Collection of Dazzling Designs



**Regine Schwarzer**

*Royal Jewel* | 2008

32 X 32 X 1 CM

Chabazite, basalt, cubic  
zirconia, sterling silver; cut

PHOTOS BY STEVE WILSON







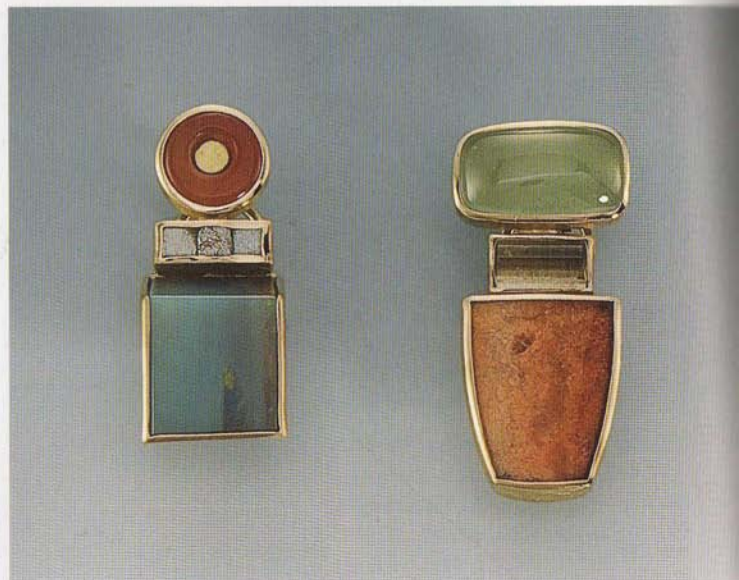
**Regine Schwarzer**

*Brooches* | 2008

AVERAGE, 4 X 3.5 X 1.4 CM

Fossilized coral, aventurine,  
quartz, pink tourmaline, chabazite,  
basalt, chrysoprase; cut

PHOTO BY GRANT HANCOCK



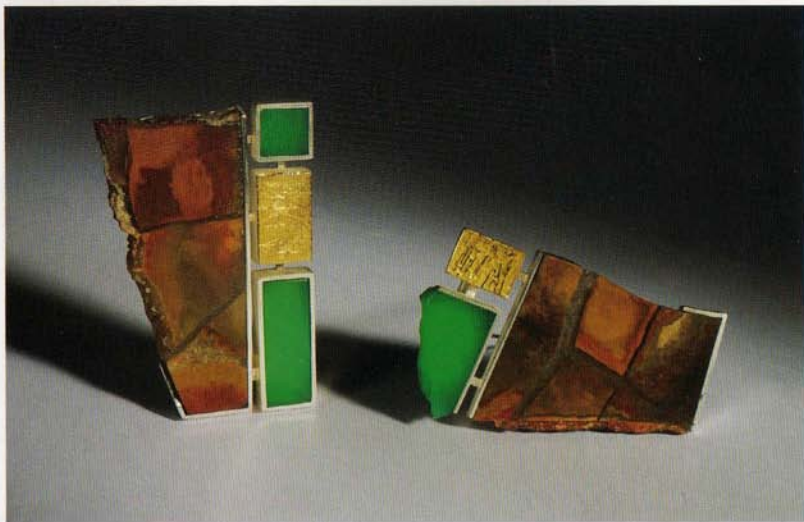
**Janis Kerman**

*Earrings* | 2007

EACH, 4.4 X 2.5 CM

18-karat gold, opal, aventurine,  
tourmaline, industrial diamonds;  
hand fabricated, assembled

PHOTO BY DALE GOULD, VISUAL ASPECTS



**Regine Schwarzer**

*Brooches* | 2007

LEFT, 5.6 X 3.6 X 0.8 CM; RIGHT, 3.7 X 5.4 X 0.8 CM

Jasperoid, chrysoprase, sterling silver, 24-karat gold; hand cut

PHOTO BY STEVE WILSON



**Marina Elenskaya**

Untitled | 2008

4 X 5.5 X 6.5 CM

Wood, chrysoprase

PHOTO BY FEDERICO CAVICCHIOLI